



SOUTH ORANGE COUNTY COMMUNITY COLLEGE DISTRICT

# INSPIRE 2035

SHAPING THE FUTURE



# Welcome

## TO OUR ROAD MAP TO THE FUTURE



Dr. Julianna M. Asperin Barnes  
**SOCCCD Chancellor**

**Inspire 2035 is SOCCCD's bold and future-forward comprehensive plan which encompasses our new strategic and facilities plans.** This represents not only our vision for the next decade, but also the collective wisdom and commitment of our district-wide community. We are united by a belief in the power of education to transform lives. Through Inspire 2035, we reaffirm our commitment to student success and equity, economic and social mobility, innovation and technology, environmental sustainability, and institutional effectiveness. These priorities position us to meet the needs of today while preparing for the challenges of tomorrow. Thank you to everyone who contributed to this plan and who will continue to bring it to life. Together, we will lead with vision, act with purpose, and inspire a future of opportunity for all, where students are the heart of what we do and who we are.

# The District's

## VISION, MISSION, AND PRIORITIES



**VISION:** Empowering students, transforming lives, and strengthening communities through education.

**MISSION:** We place students at the heart of our mission, transforming their lives and nurturing creative thinkers that enhance the vitality of the communities we serve. Grounded in principles of equity, belonging, and innovation, we ensure equitable access and foster outcomes that promote economic and social mobility.

### Our Values

**Community** • We foster a collaborative and inclusive environment where relationships – within our institution and beyond – are built on respect, trust, and a shared commitment to student success and community impact.

**Equity** • We are committed to identifying and addressing systemic barriers to ensure fair access, opportunities, and outcomes for every member of our community.

**Excellence** • We uphold the highest standards in teaching, learning, and service, empowering our community to reach their full potential.

**Innovation** • We embrace creativity, forward-thinking solutions, and continuous improvement to meet the evolving needs of our students and community.

**Belonging** • We cultivate a welcoming environment where every individual feels valued, respected, validated, and fully included in the life of the college.

**Student-Centered** • We place students at the heart of everything we do, ensuring their needs, aspirations, and voices shape our policies, practices, and programs.

**Empowerment** • We inspire individuals to realize their potential by providing the resources, knowledge, and support needed to achieve personal, academic, and professional success.

### SOCCCD'S PRIORITIES



#### Student Centered

SOCCCD will foster an inclusive environment where students feel valued and supported.



#### Economic and Social Mobility

SOCCCD will advance the economic and social mobility of students.



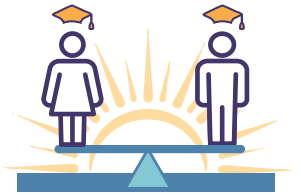
#### Equitable Access

SOCCCD will ensure students have equitable access to opportunities to explore, enroll in, and succeed in their educational journeys.



#### Community Vitality and Engagement

SOCCCD will enhance community vitality and engagement.



#### Equitable Outcomes

SOCCCD will provide the support, resources, and opportunities needed for all students to achieve academic and career success.



#### Workplace Culture and Growth

SOCCCD will foster a safe environment where employees feel empowered, valued, and respected.



#### Where to Find the Full Plan

The 87-page Inspire 2035 Plan is found on the District website using this QR code or by this URL:  
[www.socccd.edu/inspire2035](http://www.socccd.edu/inspire2035)