



# Internal Scanning

Saddleback Visioning Session

# CAMPUS VISIONING SESSIONS

**SADDLEBACK COLLEGE**

## Campus VISIONING SESSION



**INSPIRE**  
SHAPING THE FUTURE  
2035

 **October 18, 2024**  
9:30am - 1:30pm  
ATAS  
LOBBY

As we move forward with the District 2035 Strategic Plan, we would like to understand your experiences and preferences for the future. Please stop by to participate in our visioning session.

*Your Voice Matters*  
We want to hear from you.

[www.socccd.edu](http://www.socccd.edu)

**IRVINE VALLEY COLLEGE**

## Campus VISIONING SESSION



**INSPIRE**  
SHAPING THE FUTURE  
2035

 **October 22, 2024**  
10:00am - 2:00pm  
Student Services Center  
(SSC) Quad

As we move forward with the District 2035 Strategic Plan, we would like to understand your experiences and preferences for the future. Please stop by to participate in our visioning session.

*Your Voice Matters*  
We want to hear from you.

[www.socccd.edu](http://www.socccd.edu)





# Saddleback College

*Campus Visioning Session*





# WHY Saddleback?

## STUDENTS

**Good transfer college**

*To save money / good community*

**Nearby (close to home)**

**Opportunities**

**Commute for sports programs**

*To become the first woman to  
earn a degree in my family*

**More vegan options**

*I wasn't ready to go straight to a 4-year,  
but I still wanted to be in school*





# WHY Saddleback?

EMPLOYEES

**Great leadership**

*Supportive*

**To help students  
improve their lives**

**Opportunities**

*To help other first-generation students succeed*

**Family**

**Distance**

*As a former student, giving back to  
the college that helped my growth*

*Good reputation, heard that it pays well*

**Growth**

**Diversity & Inclusion**

**Future learning**

*Conferences*



# ONE WORD to describe Saddleback College...

STUDENTS + EMPLOYEES

# TODAY

Accessible Inclusive Top-down  
Supportive Political  
Bureaucratic Hierarchical  
**Evolving**  
Home  
Changing  
Friendly  
Caring  
Success  
**Striving**  
Transitional  
Community  
Engaging  
Efficient Resourceful Safe  
Capable  
**Helpful**  
Flux  
Wonderful  
**Progressing**  
Improving  
Welcoming  
Kind  
Nice

# FUTURE

Amenities Leadership  
Motivational Kind Hub  
Balance Morale  
Technology Welcoming Goals  
**Equity** Directions Growth  
Diversity Visibility Innovation  
Strong  
**Inclusivity** Home  
Dream Family Innovation Thrive  
Caring Educational



# What are the **MAIN REASONS** you come to campus?

## STUDENTS

ATTENDING CLASS



USING STUDENT SUPPORT SERVICES



BE WITH MY FRIENDS



OTHER

- TO FIND COMMUNITY
- IN PERSON CLASSES ARE EASIER TO CONCENTRATE IN
- TO TRANSFER
- TO LEARN HOW TO ASK FOR HELP

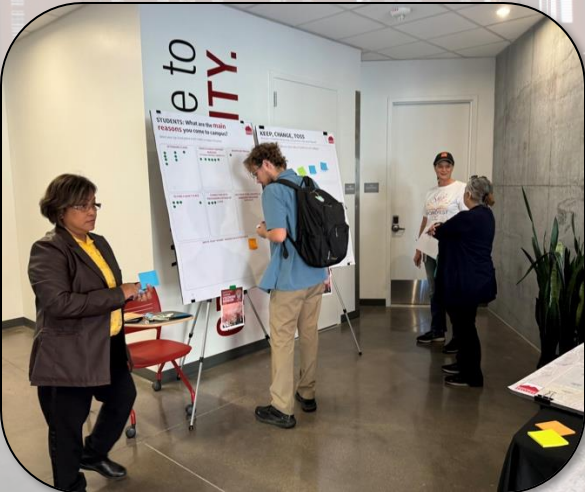
TO FIND A QUIET PLACE



CONNECTING WITH PROFESSORS OUTSIDE OF CLASS



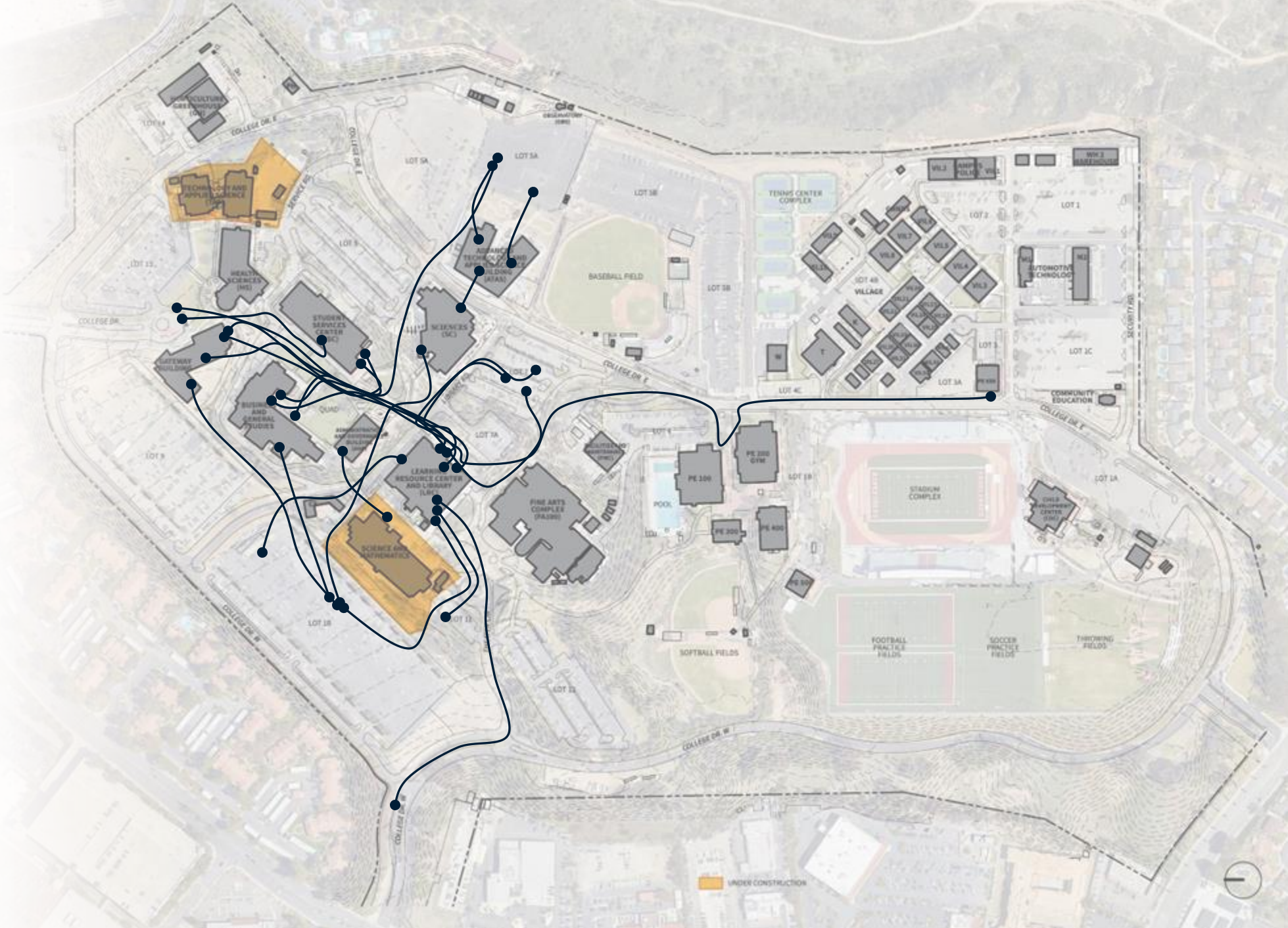
HELP WITH FOOD, HOUSING, & EMERGENCY VOUCHERS





# What is your **TYPICAL PATH** through campus?

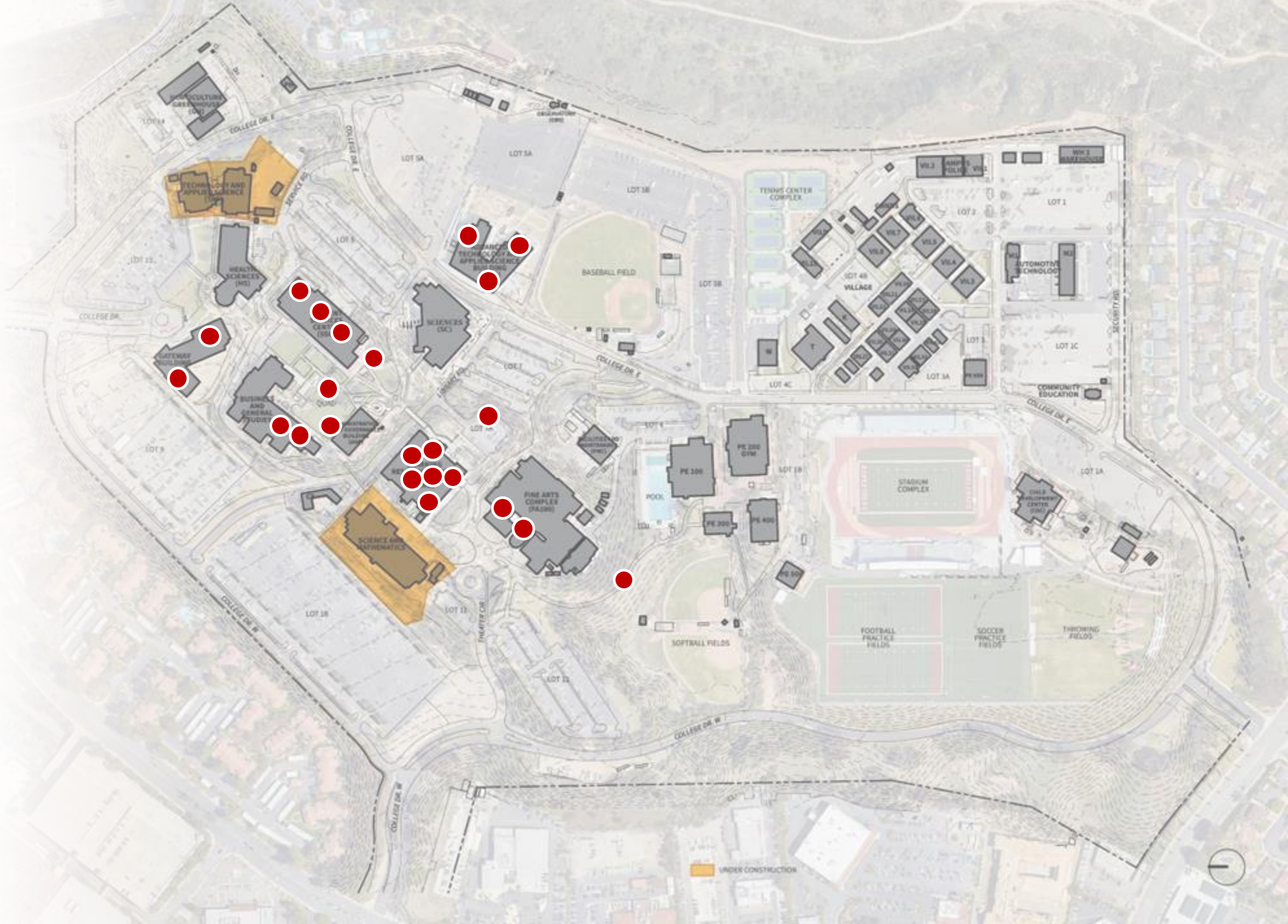
STUDENTS





What is your  
**FAVORITE PLACE**  
on campus?

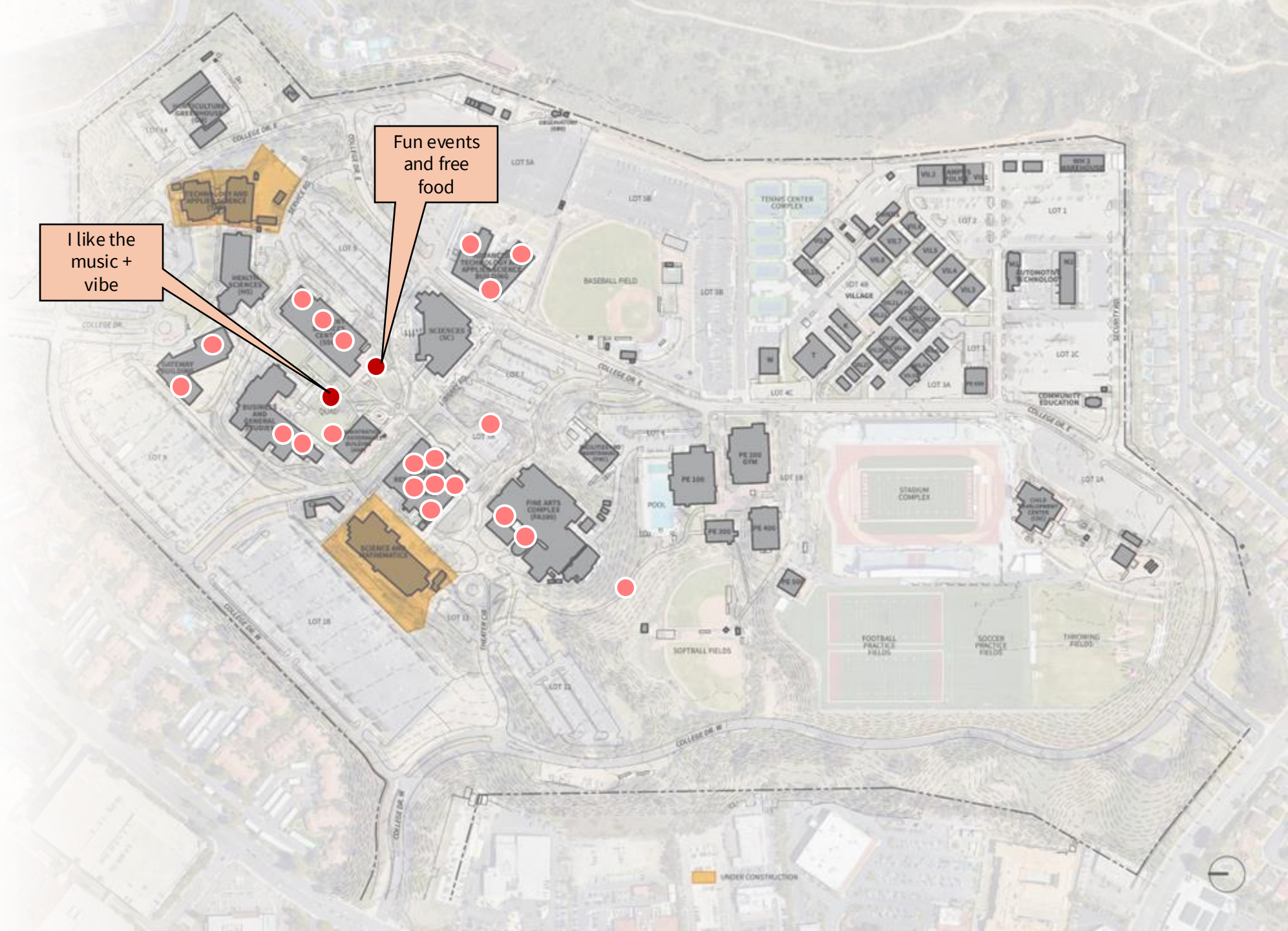
STUDENTS





# What is your **FAVORITE PLACE** on campus?

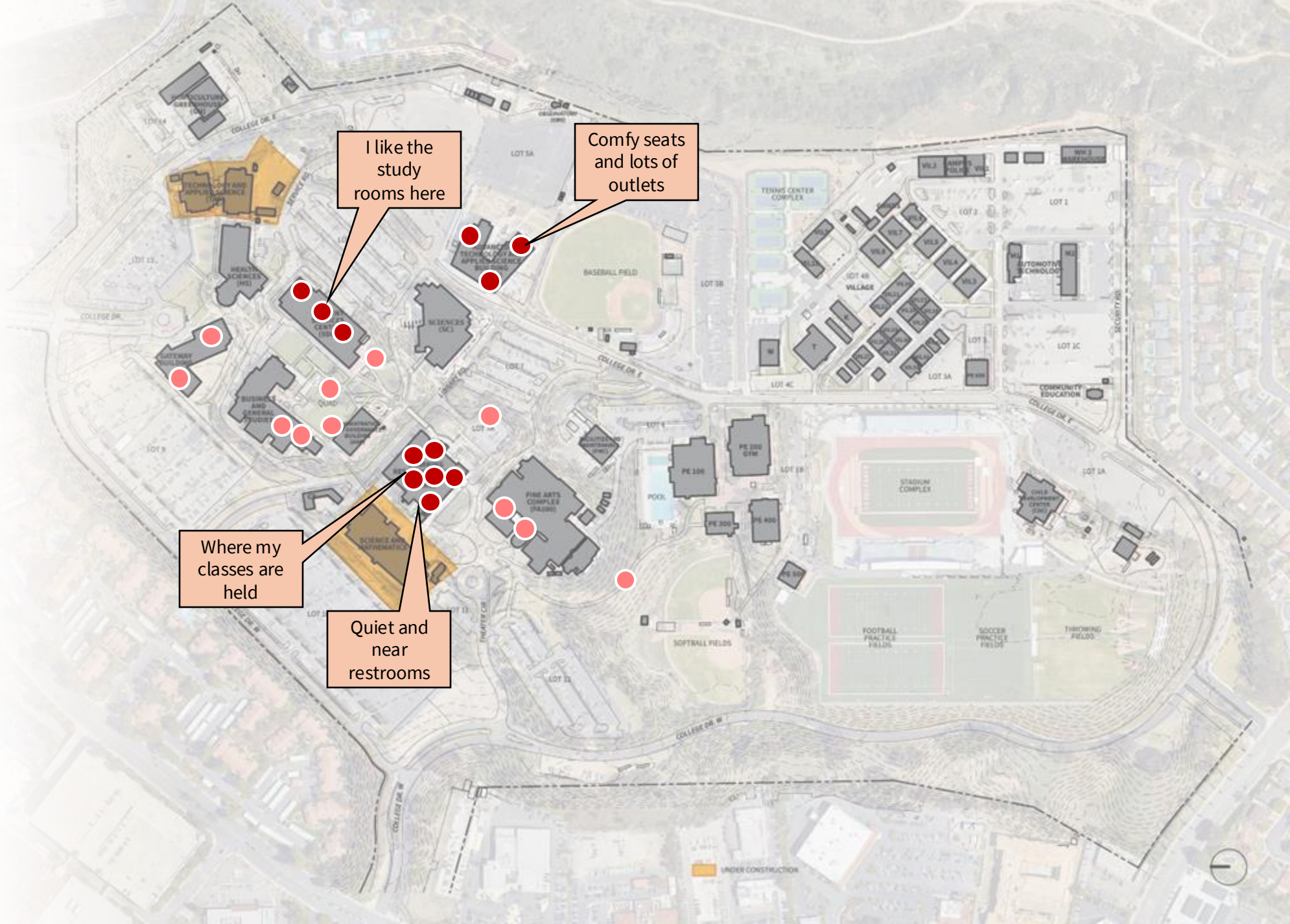
STUDENTS





What is your  
**FAVORITE PLACE**  
on campus?

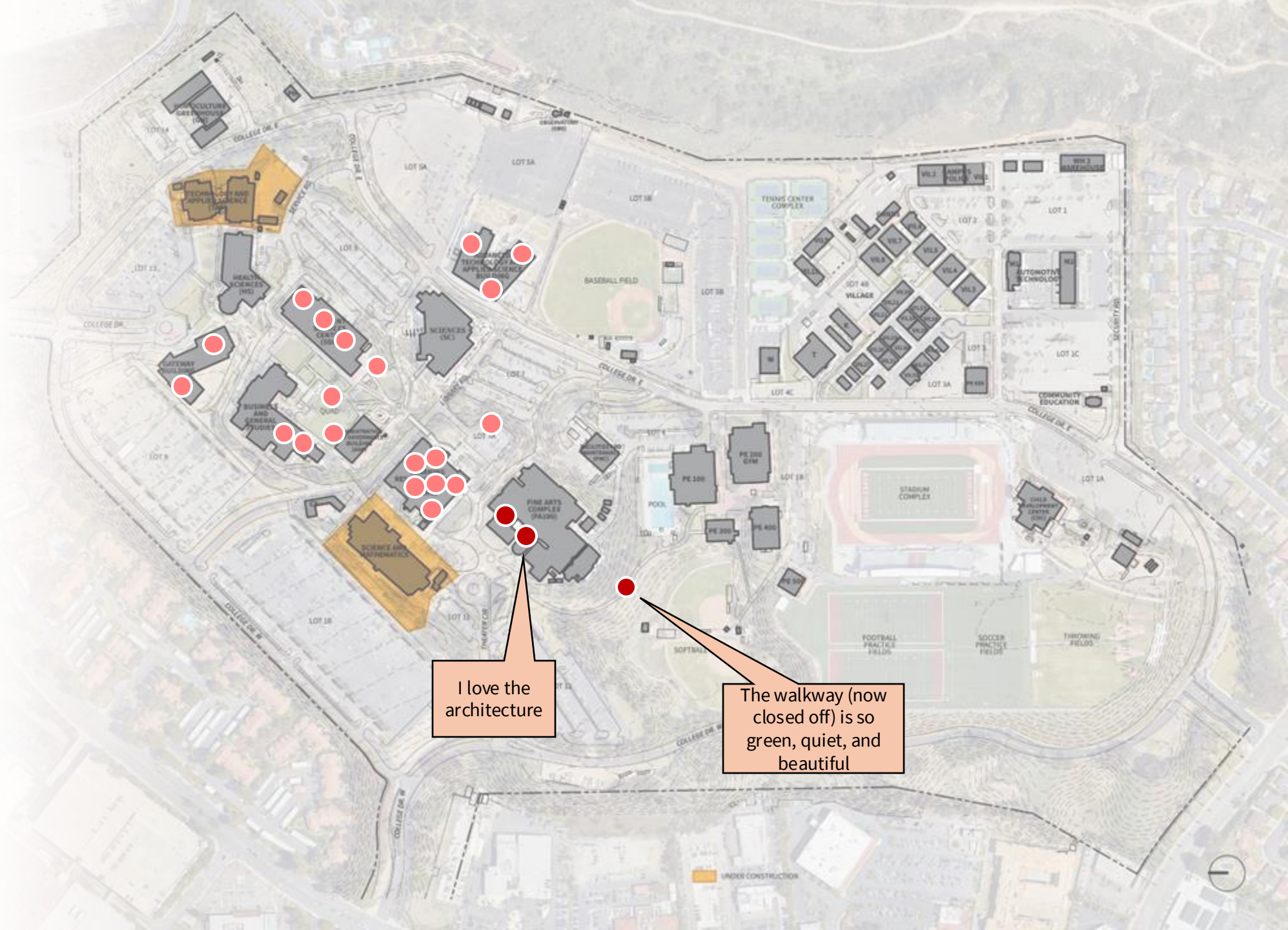
STUDENTS





# What is your **FAVORITE PLACE** on campus?


## STUDENTS






# KEEP/CHANGE/TOSS


STUDENTS + EMPLOYEES

 **KEEP:** What do you love about Saddleback?

- **Staff are service-oriented and amazing**
- **Affordable**
- The Quad
- Vending machines
- Bus access
- Success Coaches
- The vision of opportunity and growth with an action plan
- Student clubs and organizations

 **CHANGE:** What could be improved?

- **Cafeteria and food resources**
- **Relationships with SOCCCD**
- English and Humanities students need and deserve modern classrooms
- More online classes
- More direct aid to students
- Free classes/books
- Quiet outdoor spaces
- Wheelchair accessibility near BGS
- Basic needs and allocation of student emergency money
- Extended hours at Student Health Center

 **TOSS:** What would you get rid of?

- Negative mindset and attitude
- Too many District Managers
- SOCCCD bottle neck approvals
- Management structure
- Manager vs Classified hierarchy
- Lack of equity focus
- Tight budget
- Silos
- 4/10 summer schedule
- Classes centered around the 10AM-12:20PM schedule
- Old cargo van
- Increase support and service approach from District Services



# 100 IDEAS to make Saddleback College a better place?

## STUDENTS + EMPLOYEES

### FOOD & DRINK

- **Dedicated cafeteria with a variety of food**
- **Coffee shops**
- Food courts
- Chipotle on campus

### CAMPUS IMPROVEMENTS

- **More Oak trees / shade on campus**
- **Student Housing**
- ***Dedicated weight room for staff***
- New Fine Arts Complex
- Renovate OTAS
- New Cargo Van

### CLASS OPTIONS

- **Work-based learning opportunities for students**
- Economic and workforce development
- Classes that offer internship reference
- Production design class

### STUDENT SUPPORT

- Build a student union
- More registration support
- Opportunities for alumni to come back and learn more

### CAMPUS CULTURE

- **More Quad events**
- Use old buildings for events (open mic, concerts)
- More student lounge areas
- Events outside of class times

### DREAMERS & FIRST GEN

- **Dream center**
- Undocumented ally training for all students
- Safe place for first generation students

### LEADERSHIP

- **Effective collaboration between College and District**
- Greater urgency for decisions that will impact the future
- Funds to campuses align with what we get (not SCFF) in taxes
- Change DRAC model

### MISCELLANEOUS

- Invite community government support agencies to offer services on campus



# PRIORITIES FOR LONG-RANGE PLANNING?

## DISCUSSION

*What do you think are the most important topics to address in Inspire 2035?*