

# INSPIRE 2035

SHAPING THE FUTURE



## Welcome

### TO OUR ROAD MAP TO THE FUTURE

Welcome to **Inspire 2035**, SOCCCD's bold and future-forward comprehensive plan which encompasses our new strategic and facilities plans. This represents not only our vision for the next decade, but also the collective wisdom and commitment of our district-wide community. We are united by a belief in the power of education to transform lives. Through Inspire 2035, we reaffirm our commitment to student success and equity, economic and social mobility, innovation and technology, environmental sustainability, and institutional effectiveness. These priorities position us to meet the needs of today while preparing for the challenges of tomorrow. Thank you to everyone who contributed to this plan and who will continue to bring it to life. Together, we will lead with vision, act with purpose, and inspire a future of opportunity for all, where students are the heart of what we do and who we are.



Dr. Julianna M. Asperin Barnes  
SOCCCD Chancellor

# South Orange County

## DISTRICT PROFILE

SOCCCD is comprised of Saddleback College, Irvine Valley College, and the Advanced Technology & Education Park (ATEP). Our colleges are fully accredited, preparing more than 50,000 students each year for associate degrees, transfer to universities, and workforce training. SOCCCD has contributed to the quality of life and economic vitality of the community through our mission to provide excellent education and career training to generations since 1967.



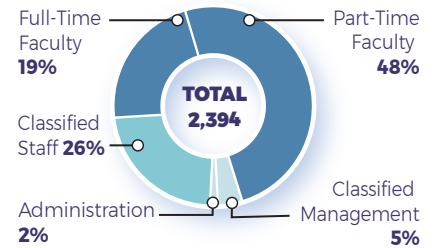
### Saddleback College

- City: **Mission Viejo**
- Student headcount 2024-25: **34,355**
- Year Founded: **1968**
- Campus: **200 acres**

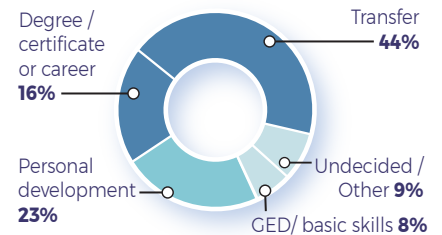


### District Data

#### EMPLOYEE TYPE



#### STUDENT EDUCATIONAL GOAL



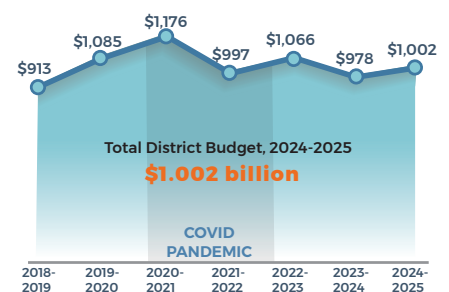
### Irvine Valley College

- City: **Irvine**
- Student headcount 2024-25: **20,052**
- Year Founded: **1985**
- Campus: **100 acres**



### TOTAL DISTRICT BUDGET

In millions of dollars



### ATEP

#### Advanced Technology & Education Park

This 61.4-acre campus in Tustin combines college facilities and private companies to provide student workforce training.







# The District's

## VISION, MISSION, AND PRIORITIES

**VISION:** Empowering students, transforming lives, and strengthening communities through education.

**MISSION:** We place students at the heart of our mission, transforming their lives and nurturing creative thinkers that enhance the vitality of the communities we serve. Grounded in principles of equity, belonging, and innovation, we ensure equitable access and foster outcomes that promote economic and social mobility.

### District-wide Values

**Community** • We foster a collaborative and inclusive environment where relationships — within our institution and beyond — are built on respect, trust, and a shared commitment to student success and community impact.

**Equity** • We are committed to identifying and addressing systemic barriers to ensure fair access, opportunities, and outcomes for every member of our community.

**Excellence** • We uphold the highest standards in teaching, learning, and service, empowering our community to reach their full potential.

**Innovation** • We embrace creativity, forward-thinking solutions, and continuous improvement to meet the evolving needs of our students and community.

**Belonging** • We cultivate a welcoming environment where every individual feels valued, respected, validated, and fully included in the life of the college.

**Student-Centered** • We place students at the heart of everything we do, ensuring their needs, aspirations, and voices shape our policies, practices, and programs.

**Empowerment** • We inspire individuals to realize their potential by providing the resources, knowledge, and support needed to achieve personal, academic, and professional success.

### SOCCCD'S PRIORITIES



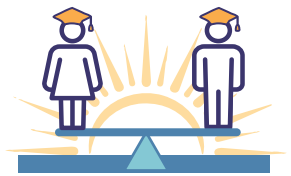
#### Student Centered

SOCCCD will foster an inclusive environment where students feel valued and supported.



#### Equitable Access

SOCCCD will ensure students have equitable access to opportunities to explore, enroll in, and succeed in their educational journeys.



#### Equitable Outcomes

SOCCCD will provide the support, resources, and opportunities needed for all students to achieve academic and career success.



#### Economic and Social Mobility

SOCCCD will advance the economic and social mobility of students.



#### Community Vitality and Engagement

SOCCCD will enhance community vitality and engagement.



#### Workplace Culture and Growth

SOCCCD will foster a safe environment where employees feel empowered, valued, and respected.



**"[I chose this college] to help other first-generation students succeed."**

Voices from the District  
[EMPLOYEE]



## FACILITIES GUIDING PRINCIPLES

During the next 10 years, SOCCCD intends to pursue an ambitious schedule of renovation and new construction on each campus. The guiding principles below will shape the future projects shown on the campus maps.

## Student Success

- Increase access to multi-modality learning spaces
- Develop spaces to encourage students to spend more time on campus
- Integrate and consolidate functions and services

## Community

- Develop indoor and outdoor spaces to support events, activities and wellness
- Increase availability and choices for food
- Develop campuses to enhance safety and security (i.e., pathways, lighting, etc.)

## Access

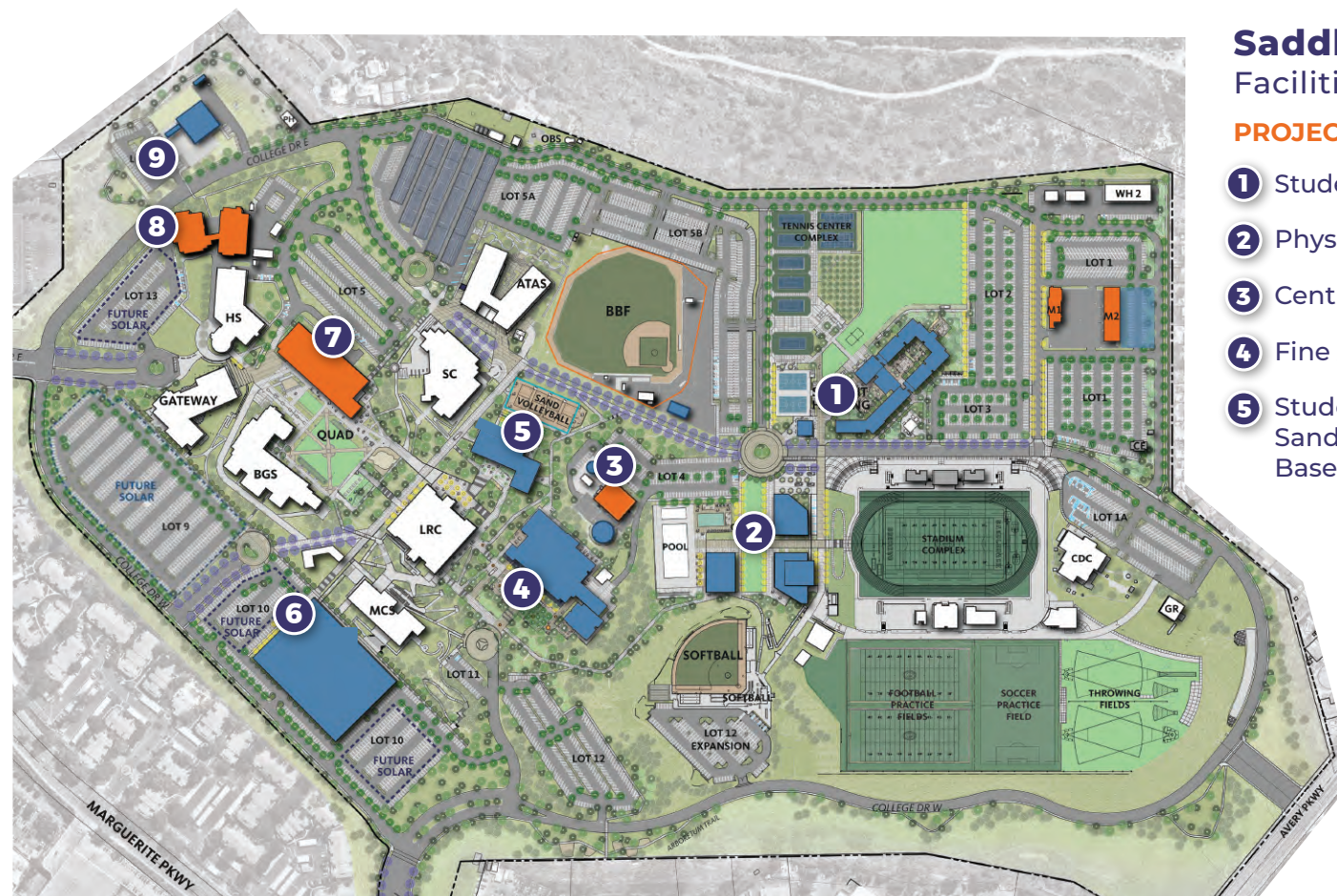
- Develop welcoming and inviting entry experiences
- Improve access to programs and services
- Improve campus organization to enhance intuitive way-finding
- Create logical groupings of functions by developing and clarifying circulation patterns

## Efficiency

- Create agile and flexible spaces to support multiple uses
- Replace temporary, inefficient and underperforming facilities
- Right-size facilities to support program needs

## Stewardship

- Prioritize sustainability in decision-making
- Increase awareness and enhance communication regarding sustainability practices
- Increase partnerships and collaborations
- Optimize all available resources and assets (including land and facilities)
- Position to maximize external funding opportunities

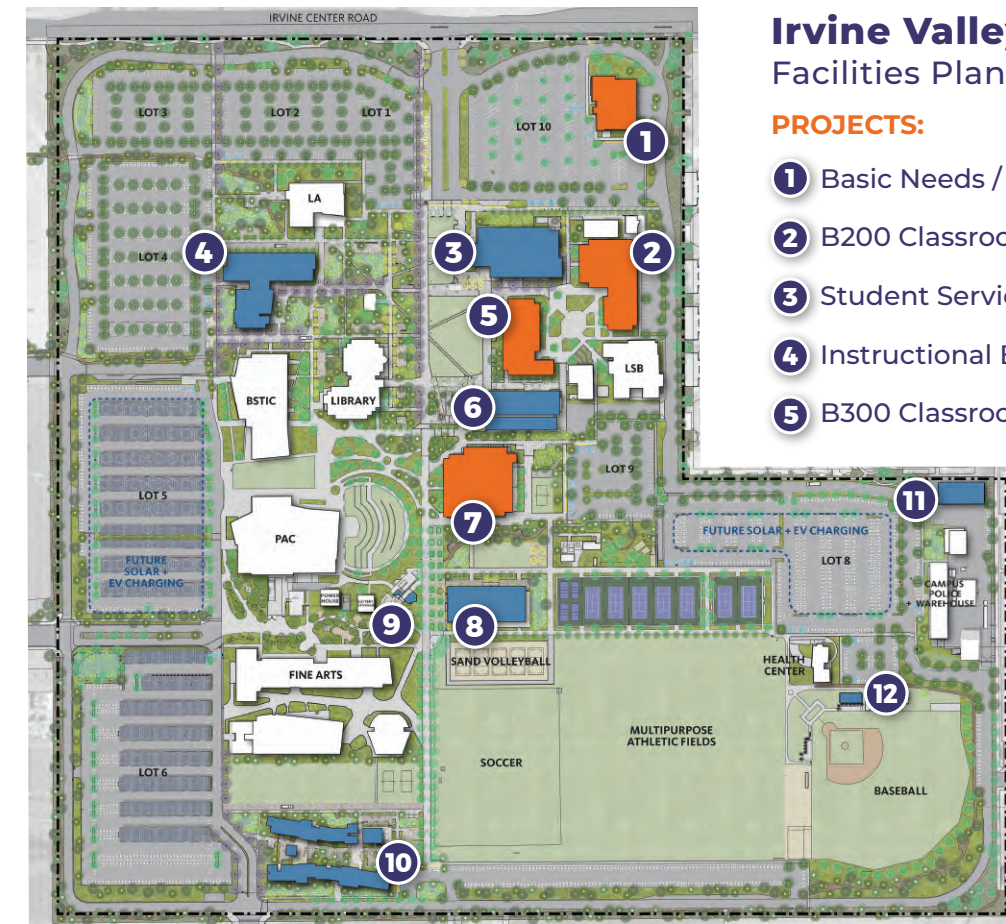


## Saddleback College

### Facilities Plan

## PROJECTS:

- 1 Student Housing & Coffee Structure
- 2 Physical Education Complex
- 3 Central Plant
- 4 Fine Arts Complex & Theater
- 5 Student Wellness Center;  
Sand Volleyball Courts;  
Baseball Field Upgrades
- 6 Parking Structure
- 7 College Center
- 8 Former Advanced  
Technology & Applied  
Science Building
- 9 Horticulture/Biology  
Greenhouses



## Irvine Valley College

### Facilities Plan

## PROJECTS:

- 1 Basic Needs / Future Programs
- 2 B200 Classrooms
- 3 Student Services
- 4 Instructional Building A
- 5 B300 Classrooms
- 6 Student Union
- 7 Gym / PE 200
- 8 PE 100
- 9 Arts Promenade & Coffee Structure
- 10 Student Housing
- 11 Maintenance & Operations
- 12 Baseball Team Room



**"I wasn't ready to go straight to a 4-year, but I still wanted to be in school."**

Voices from the District  
[STUDENT]



**"I chose this college so that I can become the first woman to earn a degree in my family."**

Voices from the District  
[STUDENT]



# Process for Creating Inspire 2035

The Inspire 2035 strategic and facilities plan was born out of a simple but powerful question: How can the South Orange County Community College District (SOCCCD) boldly prepare for the future while remaining rooted in our mission of student success and community impact?

As the world around us continues to evolve — through advances in technology, shifting workforce demands, and growing calls for equity and sustainability—it became clear that SOCCCD needed a renewed road map. One that honors our legacy while re-imagining our future.

Inspire 2035 is the result of a nearly year-long, inclusive, and iterative planning process led by the Chancellor's Planning Commission and shaped by the collective voices of our colleges, district services, and broader community. Through town halls, surveys, workshops, and listening sessions, we gathered insights from students, faculty, classified professionals, administrators, trustees, and community partners. These conversations revealed both our challenges and our aspirations — and provided a foundation for building a shared vision for the next decade.

This process was guided by the principles of collaboration, inclusivity, transparency, and innovation. The result is a comprehensive strategic and facilities plan that is not only responsive to current realities but also forward-thinking and transformative. **Inspire 2035 reflects who we are, what we value, and where we are headed — together.**

## Where to Find the Full Plan

The 87-page Inspire 2035 Plan is on the district website at:

**[www.socccd.edu/inspire2035](http://www.socccd.edu/inspire2035)**

You can scan this QR code to take you to the plan.



## South Orange County Community College District

### BOARD OF TRUSTEES

Lisa A. Bartlett, Ryan Dack, Carolyn Inmon, Timothy Jemal, Marcia Milchiker, T.J. Prendergast III, Terri Rydell, Ed.D.

### CHANCELLOR

Dr. Julianna M. Asperin Barnes

### COLLEGE PRESIDENTS

Dr. Elliot Stern, Saddleback College

Dr. John C. Hernandez, Irvine Valley College

It is the policy of the SOCCCD to fully comply with the requirements of the Americans with Disabilities Act. Consistent with that policy, this material is available in alternative formats. Such materials and other disability accommodations will be provided as needed upon request. For needed accommodations or alternate formats, please visit **[www.socccd.edu/ada](http://www.socccd.edu/ada)**