

FACILITIES PLAN STATUS REPORT
July 15, 2019

CAPITAL IMPROVEMENT PLANNING

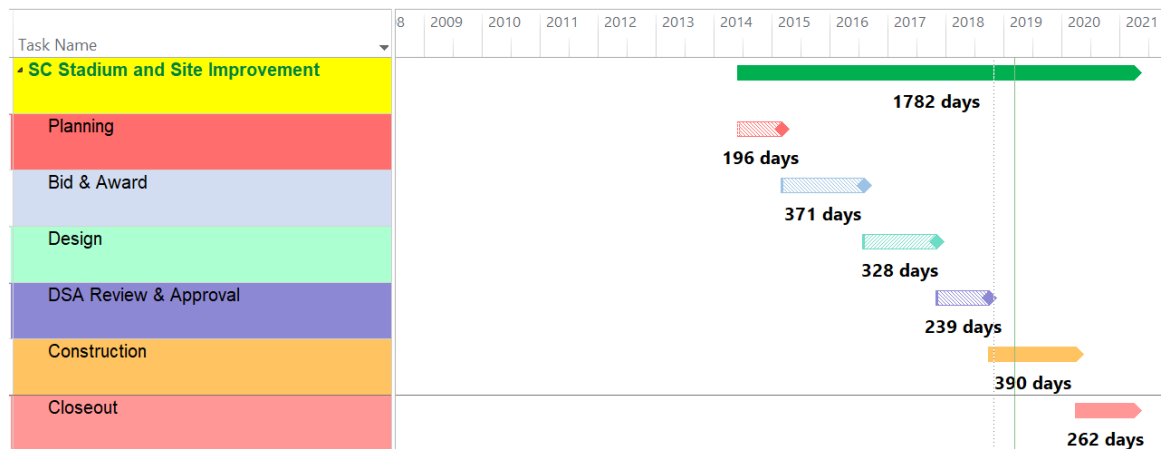
The decision to design and construct capital improvement projects begins with the Education and Facilities Master Planning (EFMP) process. The last EFMP cycle was completed December 2011. The 2011 EFMP report is available at the District website: http://www.socccd.edu/about/about_planning.html. The EFMP process is underway with the development of the Education Master and Strategic Plan. This report contains information on projects over \$1 million that are listed in the Facilities Master Plans for both colleges and projects that include associated planning efforts.

SADDLEBACK COLLEGE

1. STADIUM AND SITE IMPROVEMENT

Project Description: The existing stadium will be replaced with a new 8,000 seat multi-sport stadium with restrooms, team rooms, concession stand, ticket booth, storage, press box, scoreboard, synthetic turf and nine-lane running track. This project includes the southeast campus perimeter drainage control and campus storm water outfall on County of Orange property. The existing practice fields and thrower’s park will be relocated to and replace the Golf Driving Range and expanded to include a soccer practice field.

Start Preliminary Plans	Mar 2014	Award D/B Contract	Aug 2016
Start Working Drawings	Sep 2016	Complete Construction	Jun 2020*
Complete Working Drawings	Nov 2017	Advertise for FF&E	Oct 2019
DSA Final Approval	Nov 2018	DSA Close Out	Pending



*Contractor has not provided a compliant schedule. *Bleacher subcontractor challenges are expected to impact projected completion.* This date remains in question.

Budget Narrative: Budget reflects Board agenda action on 3/24/2008, 6/23/2014, and 6/22/2015. Several previously budgeted projects are integrated into a single project budget: Upper Quad (2008 - \$1M), Loop Road (2008 - \$3,442,000), Storm Drain Repairs (2013 - \$1,500,000) and Storm Drain, Parking, Practice Fields (2014 - \$7,638,000). On June 23, 2014, the Board approved \$950,000 and on June 22, 2015, the Board approved additional funds of \$7,945,000 and \$17,050,000. The Board approved Saddleback College's use of their RDA and a portion of the district-wide apartment income of \$22,705,000.

	<u>Original</u>	<u>Revision</u>	<u>Total</u>
Project Budget:	\$14,530,000	\$47,700,000	\$62,230,000
District Funding Commitment	\$14,530,000	\$47,700,000	\$62,230,000
Anticipated State Match:	\$N/A	\$N/A	\$N/A
Basic Aid Allocation:	\$14,530,000	\$24,995,000	\$39,525,000
College Contribution:	\$ 0	\$22,705,000	\$22,705,000

Status: Construction Phase: Project 39% complete. *Design-Build Entity (DBE) reports problems with bleacher subcontractor. Efforts to address concerns are underway and will impact the schedule.*

In Progress: Site utilities installation, building footings, off-site elevator fabrication, drainage at practice fields, home side concrete masonry units (cmu) installation, *review County of Orange comments related to storm-drain outfall design, site irrigation and practice field piping installation.*

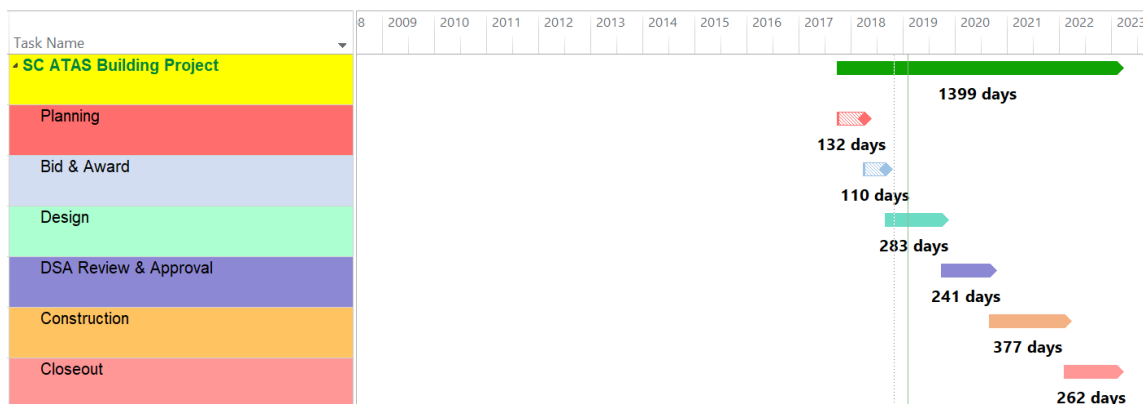
Recently Completed: *Practice field perimeter fencing and netting installed, re-worked base of retaining wall due to storm damage, palm trees planted, north entry ramp and ticket booth stairs complete.*

Focus: *Evaluate steel tariffs impact. Meet with PCL executive team. Arrive at contract compliant schedule. Review contractor's change order requests.*

2. ATAS BUILDING PROJECT

Project Description: The Project includes a new 50,000 gross square feet (GSF) two-story building serving career technical education students. This building will be located at the existing tennis courts facility. Eight new tennis courts (including two striped for pickle ball) will replace the existing six and will be located north of the Village. The college has requested that the existing TAS Building demolition, utility relocation and new parking lot be de-scoped. A *connector* road and installation of additional parking stalls between the baseball field and the new tennis courts is included.

Start Preliminary Plans	Oct 2017	Award D/B Contract	Aug 2018
Start Working Drawings	Oct 2018	Complete Construction	Aug 2022
Complete Working Drawings	Sep 2019	Advertise for FF&E	Pending
DSA Final Approval	Sep 2020	DSA Close Out	Pending



Budget Narrative: In fiscal years 2002-2003 and 2004-2005, \$971,000 and \$985,000 respectively, for a total of \$1,956,000 was allocated from basic aid to cover design. Budget reflects Board agenda action on 8/27/2012, 10/25/2013, 6/23/2014, 8/22/2016 and 5/21/2018. On August 27, 2012, the Board approved \$12,777,313. On October 25, 2013, the Board approved fund reassignment of \$8,523,000 to the Saddleback College Sciences Building. On June 23, 2014, the Board restored \$8,523,000 and added \$2,702,000. On August 22, 2016, the Board approved \$3,110,000. On May 21, 2018, the Board approved \$44,863,622 to fund a new building. The ATAS Building project budget of \$64,100,000 differs from the basic aid allocation due to funds spent for the Technology and Applied Science renovation project prior to the decision to move forward with a new building.

	<u>Original</u>	<u>Revision</u>	<u>Total</u>
Project Budget:			
TAS Renovation	\$8,755,055	\$ (7,446,120)	\$ 1,308,935
ATAS Building	\$ 0	\$64,100,000	\$64,100,000
Total	\$8,755,055	\$56,653,880	\$65,408,935
District Funding Commitment:	\$8,755,055	\$56,653,880	\$65,408,935
Anticipated State Match:	\$ 0	\$ 0	\$ 0
Basic Aid Allocation:	\$1,956,000	\$63,452,935	\$65,408,935

Status: Construction Documents (CD) Phase *and DSA Submittal: 100% CD* for the ATAS Building project and *DSA Submittal* for the new Tennis Courts Center.

In Progress: *ATAS Building* one-on-one user group meetings with Saddleback College *ATAS Division*, Facilities Maintenance & Operations department (FMO), Information Technology (IT) and Campus Police, and weekly design coordination meetings with Design-build Entity.

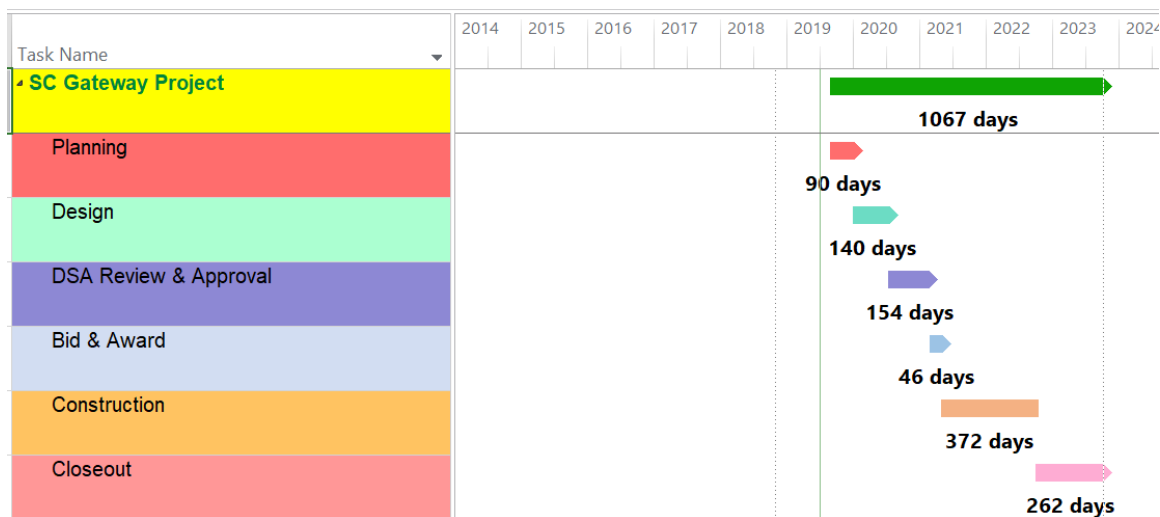
Recently Completed: Saddleback College Executive Cabinet, *ATAS Division*, FMO, College IT, and Campus Police signed off the final *ATAS Building* 100% CDs (Pre-DSA Submittal package). *Tennis Courts Center* submitted to DSA for review and approval.

Focus Issue: Finalize the *ATAS Building* design package for DSA submittal. *Kick-off for the new connector road and parking lot design.*

3. GATEWAY PROJECT

Project Description: This proposed project will construct a new three-story building of 52,156 assignable square feet (ASF), 77,985 gross square feet (GSF) and will provide a new, highly integrated space for student services and consolidated and expanded interdisciplinary instructional space. This project will reduce the need for portable buildings and set the stage for the Student Services building renovation.

Start Preliminary Plans	Sep 2019	Award Construction Contract	May 2021
Start Working Drawings	Jan 2020	Complete Construction	Oct 2022
Complete Working Drawings	Jul 2020	Advertise for FF&E	Feb 2022
DSA Final Approval	Feb 2021	DSA Close Out	Pending



Budget Narrative: Budget reflects Board action on 6/17/2013, 6/23/2014, 8/22/2016 and 6/26/2017 and 4/22/2019. On June 17, 2013, the Board approved \$1,545,115. On June 23, 2014, the Board approved a reduction of (\$655,115). On August 22, 2016, the Board approved \$1,936,817. On June 26, 2017, the Board approved \$16,832,003. On April 22, 2019, the Board approved the funding allocation of \$6,599,180.

	<u>Original</u>	<u>Revision</u>	<u>Total</u>
Project Budget:	\$42,867,000	\$ 9,471,000	\$52,338,000
District Funding Commitment:	\$12,814,000	\$13,444,000	\$26,258,000
State Match:	\$30,053,000	\$(3,973,000)	\$26,080,000
Basic Aid Allocation:	\$ 1,545,115	\$24,712,885	\$26,258,000

Status: *Pre-Design Phase.*

In Progress: Design Services Request for Proposals is underway. *Awaiting State Chancellor's Office approval to begin project expenditures.*

Recently Completed: The State Chancellor's office *requested* funding for both the preliminary plans and the working drawings for this project. *Legislature passed the state*

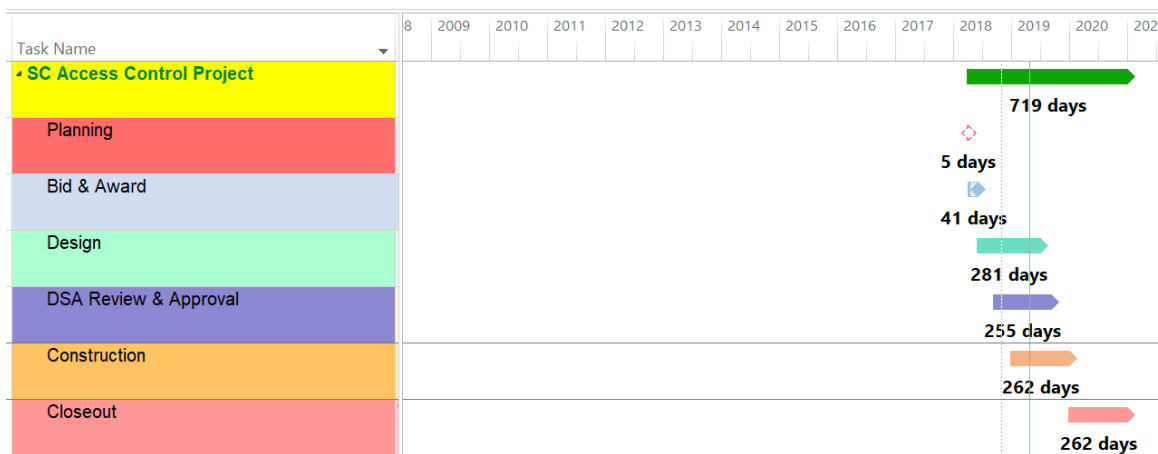
budget, which included the Gateway Building. The Governor signed the budget on June 27, 2019 allocating \$1,719,000 for preliminary plans and working drawings.

Focus: Evaluate Design Services Request for Proposals and select Architectural Services Firm.

4. ACCESS CONTROL PROJECT

Project Description: This project will retrofit 1,535 existing doors campus-wide with electronic door locks to provide access control and enhanced safety. This project is similar to the standard established at the Science Building, with hardware synchronized to software monitored by the Saddleback College Campus Police.

Criteria Development	Apr 2018	Award D/B Contract	May 2018
Start Working Drawings	Jun 2018	Complete Construction	Jan 2020
Complete Working Drawings	Jul 2019	FF&E	N/A
DSA Final Approval	Jul 2019	DSA Closeout	Pending



Budget Narrative: Budget reflects the Board agenda action on 6/26/17 and 5/21/18. On June 26, 2017, the Board approved \$3,000,000 for the District-wide ADA Transition Plan. Saddleback College assigned \$1,600,000 from its share of the ADA transition funds to this project. On May 21, 2018, the Board approved \$4,000,000. Saddleback College also assigned \$1,364,296 from college general funds. Additionally, State Scheduled Maintenance allocations across FY 2015-16, 2016-2017, 2017-2018 total \$4,845,914.

	<u>Original</u>	<u>Revision</u>	<u>Total</u>
Project Budget:	\$11,810,210	\$0	\$11,810,210
District Funding Commitment:	\$ 6,964,296	\$0	\$ 6,964,296
Basic Aid Allocation:	\$ 4,000,000	\$0	\$ 4,000,000
Basic Aid ADA Allocation:	\$ 1,600,000	\$0	\$ 1,600,000
College General Fund:	\$ 1,364,296	\$0	\$ 1,364,296
State Scheduled Maintenance Allocation:	\$ 4,845,914	\$0	\$ 4,845,914

Status: Phased Project: Increment 2 construction, including the BGS and SSC buildings, is underway. Increment 3 and 4 are ready to begin construction. Increment 5 and 6 are in the DSA review phase.

In Progress: Increment 2 construction is underway. Staff is reviewing Increment 5 DSA back check comments. DSA is reviewing the Increment 6 submittal.

Recently Completed: Increment 1 construction complete. Electrical rough in on all three floors of BGS. Increment 3 and 4 procurement for construction services.

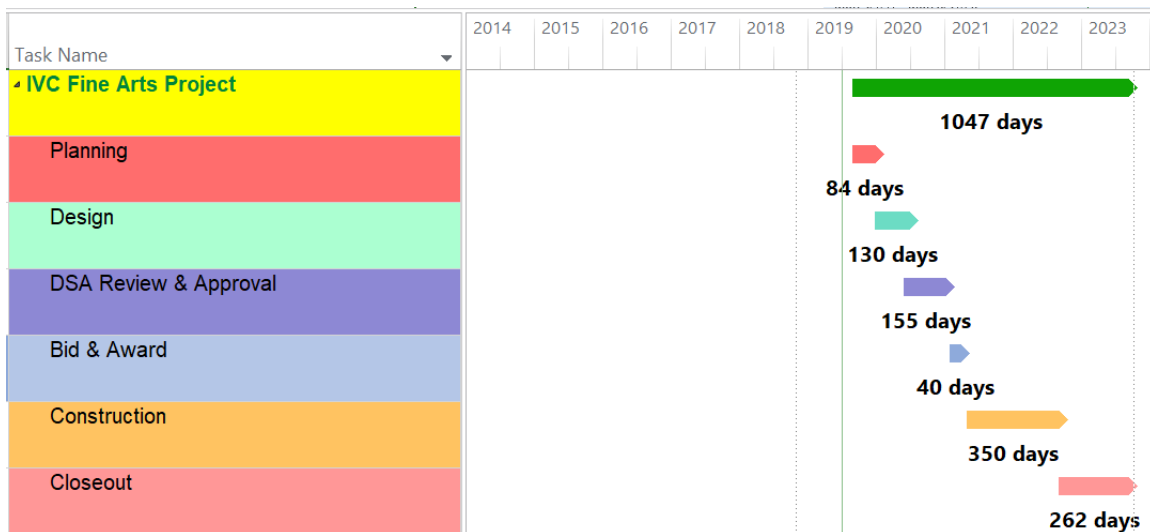
Focus: Increment 2, 3, and 4 construction.

IRVINE VALLEY COLLEGE

1. FINE ARTS PROJECT

Project Description: The proposed project will construct three buildings totaling 40,155 assignable square feet (ASF), 57,560 gross square feet (GSF) and will consolidate and expand the Fine Arts department. Art, Art History, Music and Dance instruction will relocate from laboratories currently housed across a number of different buildings on campus. The Fine Arts buildings, located southwest of the existing Performing Arts Center, will include an assembly space, labs and classrooms with some offices. Space will be vacated within the B-100, B-300 and A-300 buildings for future renovation.

Start Preliminary Plans	Sep 2019	Award Construction Contract	Apr 2021
Start Working Drawings	Dec 2019	Complete Construction	Sep 2022
Complete Working Drawings	Jun 2020	Advertise for Equipment	Jan 2022
DSA Final Approval	Jan 2021	DSA Close Out	Pending



Budget Narrative: Budget reflects Board action on 6/17/2013, 6/23/2014, 8/22/2016, 6/26/2017, and 4/22/2019. On June 17, 2013, the Board approved \$61,278. On June 23, 2014, the Board approved \$795,000. On August 22, 2016, the Board approved \$1,659,739. On June 26, 2017, the Board approved \$12,932,581. On April 22, 2019, the Board approved the funding allocation of \$7,172,680.

	<u>Original</u>	<u>Revision</u>	<u>Total</u>
Project Budget:	\$35,764,278	\$10,059,000	\$45,823,278
District Funding Commitment:	\$10,623,278	\$11,998,000	\$22,621,278
State Match:	\$25,141,000	\$(1,939,000)	\$23,202,000
Basic Aid Allocation:	\$ 61,278	\$22,560,000	\$22,621,278

Status: *Pre-Design Phase.*

In Progress: Design Services Request for Proposals is underway. *Awaiting State Chancellor's Office approval to begin project expenditures.*

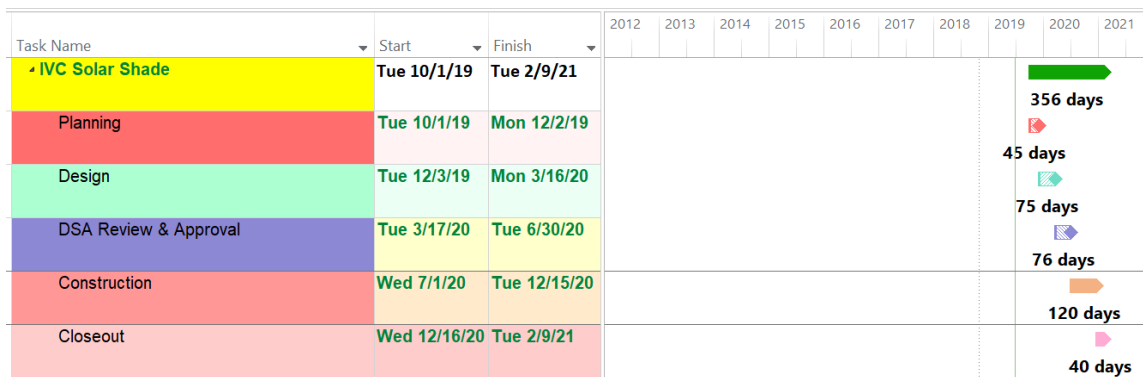
Recently Completed: The State Chancellor's office *requested* funding for both the preliminary plans and the working drawings for this project. *Legislature passed the state budget, which included all of the State Chancellor's project recommendations including the Fine Arts Building. The Governor signed the budget on June 27, 2019 allocating \$1,624,000 for preliminary plans and working drawings.*

Focus: *Evaluate Design Services Request for Proposals and select Architectural Services firm.*

2. PARKING LOT PHASE 1 & 2 AND SOLAR SHADE PROJECT

Project Description: This project includes development of a 190,000 square foot, lighted parking lot creating 594 additional parking spaces. The project includes photovoltaic panels supported on parking canopies and a battery storage system. Both systems will interconnect with the local utility grid and integrate with the campus electrical system, which will be consolidated in response to utility requirements.

Start Preliminary Plans	Oct 2019	Begin construction	Jul 2020
Start Working Drawings	Dec 2019	Complete Construction	Dec 2020
Complete Working Drawings	Mar 2020	Advertise for FF&E	N/A
DSA Final Approval	Jun 2020	DSA Close Out	Feb 2021



Budget Narrative: Budget reflects Board action on 6/23/2014, 6/22/2015, 8/22/2016, 6/26/2017 and 5/21/2018. On June 23, 2014, the Board approved \$3,010,000. On June 22, 2015, the Board approved \$90,000. On August 22, 2016, the Board approved \$3,655,000 to allow inclusion of the solar shade project and add a connection to the new perimeter road. On June 26, 2017, the Board approved \$733,000. On May 21, 2018, the Board approved \$1,300,000 to include the Phase II parking scope.

	<u>Original</u>	<u>Revision</u>	<u>Total</u>
Project Budget:	\$3,010,000	\$5,778,000	\$8,788,000
District Funding Commitment:	\$3,010,000	\$5,778,000	\$8,788,000
Anticipated State Match:	\$N/A	\$N/A	\$N/A
Basic Aid Allocation:	\$3,010,000	\$5,778,000	\$8,788,000

Status: Close Out Phase for Parking Lot project. *Staff has revised the project schedule for this report to reflect the second phase Solar Shade project.*

In Progress: *Develop Request for Proposals for the Solar Shade project. Battery system start up.*

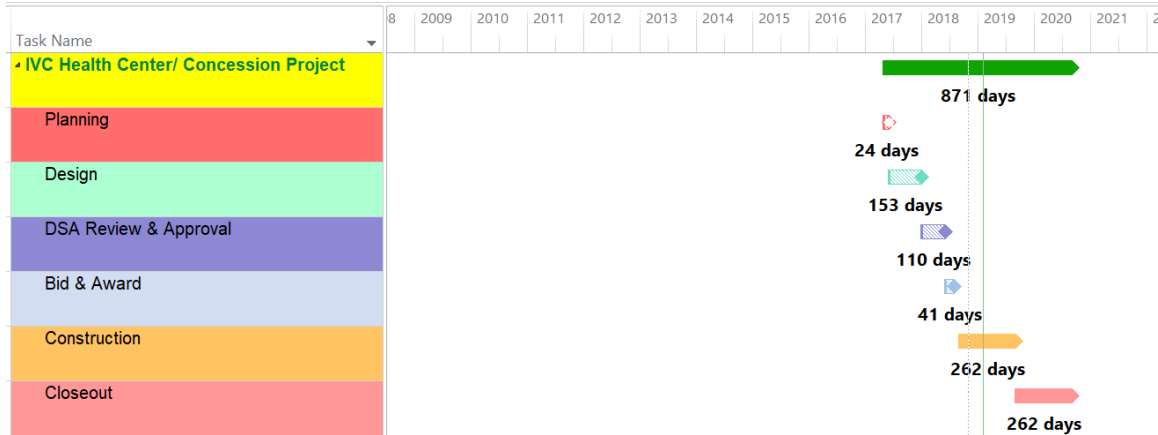
Recently Completed: *Facilities staff training on parking lot site lighting and irrigation systems completed. Commissioning of Battery Energy Storage system completed.*

Focus: *Operational start-up of Battery Energy Storage System. Issue Solar Shade RFQ&P.*

3. HEALTH CENTER/CONCESSION PROJECT

Project Description: This project is a new one story building with an estimated 2,214 assignable square feet (ASF), 3,730 gross square feet (GSF) dedicated to Health Center services, Sports Medicine, sports concession and toilet facilities. The Health Center will move from the existing Student Services building. The new Health Center/Concession building is located adjacent to the baseball fields and includes baseball bleacher seating for 300.

Start Preliminary Plans	May 2017	Award Construction Contract	Aug 2018
Start Working Drawings	Jul 2017	Complete Construction	Oct 2019
Complete Working Drawings	Jan 2018	Advertise for Equipment	Jun 2019
DSA Final Approval	Jun 2018	DSA Close Out	Pending



Budget Narrative: Budget reflects Board action on 6/22/2015, 8/22/2016, 6/26/2017 and 5/21/2018. On June 22, 2015, the Board approved \$400,000. On August 22, 2016, the Board approved \$5,338,000. On June 26, 2017, the Board approved \$402,000. On May 21, 2018, the Board approved \$1,360,000.

	<u>Original</u>	<u>Revision</u>	<u>Total</u>
Project Budget:	\$5,200,000	\$2,300,000	\$7,500,000
District Funding Commitment:	\$5,200,000	\$2,300,000	\$7,500,000
Anticipated State Match:	\$ 0	\$ 0	\$ 0
Basic Aid Allocation:	\$ 400,000	\$7,100,000	\$7,500,000

Status: Construction Phase: Project is approximately 63% complete.

In Progress: Interior finishes, low voltage wiring, final grading for site concrete and bleacher fabrication is underway.

Recently Completed: HVAC equipment installation, successful building envelope water test and interior drywall is completed.

Focus: Continue building construction, final grading for site concrete, detention basin, site concrete and bleacher fabrication.

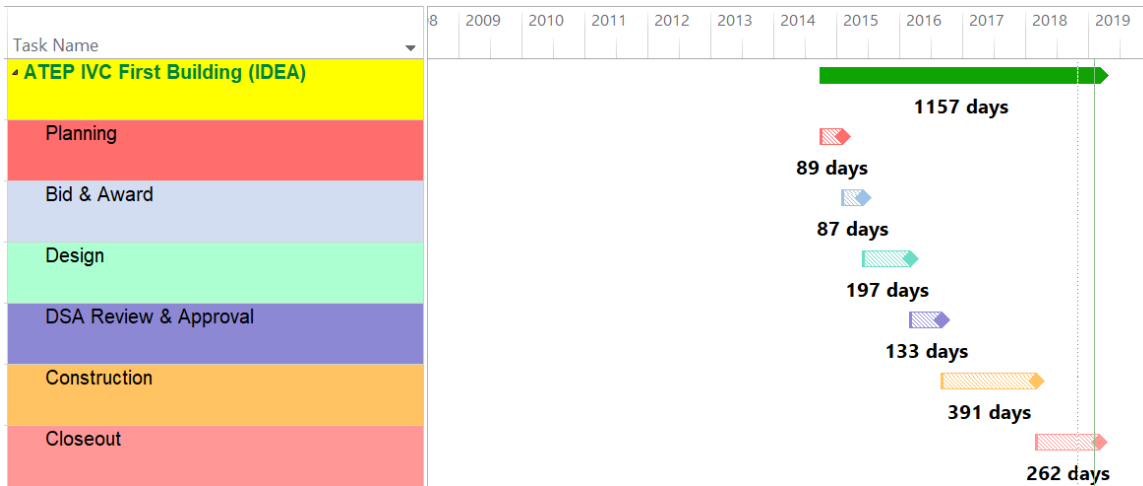
ATEP

1. ATEP - IVC FIRST BUILDING

Project Description: This project is a new two-story 20,249 assignable square feet (ASF), 32,492 gross square feet (GSF) building. The new ATEP IVC First Building consists

primarily of lab classrooms with some lecture classroom space, offices and student support services. The building was designed for automation (HAAS), subtractive and additive 3-D sculpting labs, design model prototyping, electronics, photonics, electrical, engineering computer labs, the testing center and some spaces that represent expansion. In addition to the programs identified during design, a portion of the Adult ESL (English as a second language) and the Emeritus and Community Education offices were moved to the ATEP IDEA building at its opening. The project includes 50kV of solar electric power and is a LEED Gold Equivalent building.

Start Preliminary Plans	Oct 2014	Award D-B Contract	Jun 2015
Start Working Drawings	Jul 2015	Complete Construction	Mar 2018
Complete Working Drawings	Mar 2016	Advertise for FF&E	Sep 2017
DSA Final Approval	Sep 2016	DSA Close Out	Aug 2018



Budget Narrative: Budget reflects Board action on 2/28/2011, 6/23/2014, 6/22/2015, 8/22/2016 and 6/26/2017. On February 28, 2011, the Board approved \$12,500,000, originally allocated to the Phase 3A project budget and transferred to the IVC ATEP First Building with \$8,950,000 additional funds Board approved on June 23, 2014. On June 22, 2015, the Board approved \$3,250,000 for associated parking. On August 22, 2016, the Board approved the FF&E budget of \$1,600,000. The College applied Irvine Valley College RDA funds equaling \$1,250,000 for an expanded lobby and \$700,000 for additional IT equipment. On June 26, 2017, the Board approved \$1,100,000.

	Original	Revision	Total
Project Budget:	\$23,000,000	\$ 6,350,000	\$29,350,000
District Funding Commitment:	\$23,000,000	\$ 6,350,000	\$29,350,000
Anticipated State Match:	\$ 0	\$ 0	\$ 0
Basic Aid Allocation:	\$21,450,000	\$ 5,950,000	\$27,400,000
College Contribution:	\$ 0	\$ 1,950,000	\$ 1,950,000

Status: Project Close out.

In Progress: Coordinate with contractor and SCE for battery storage Permission to Operate (PTO). Coordinate warranty related items with contractor. Working with contractor to address warranty items.

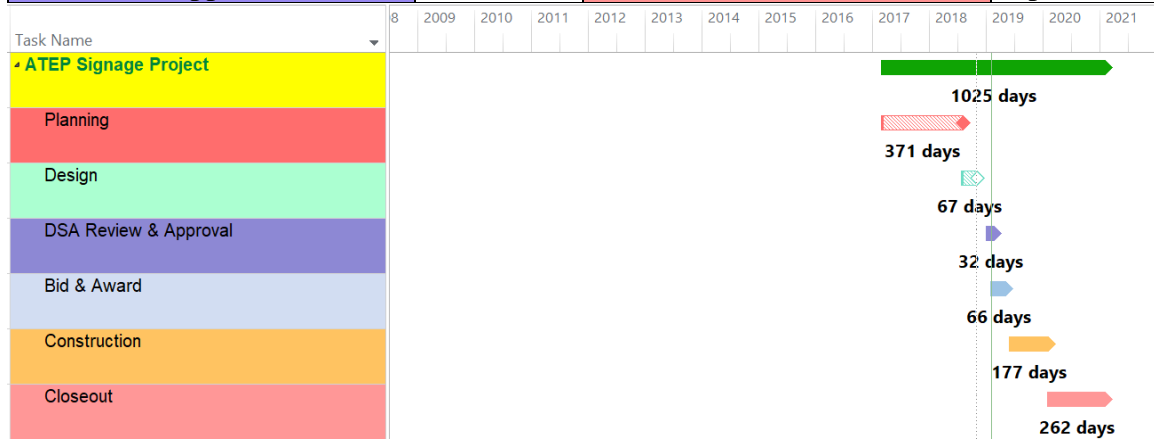
Recently Completed: Staff met with end users to identify first year discovery items.

Focus: Obtain photovoltaic interconnect agreement with utility agency allowing system to “go live”. Working on getting battery storage system connected to the photovoltaic system. Continue discussions with contractor to address end users’ first year discovery warranty items.

2. ATEP – SIGNAGE PROJECT

Project Description: Wayfinding signage for ATEP consists of monument, vehicle and pedestrian signage. This signage will define the campus as a destination, support route planning, clarify entrances and parking, create a main pathway, and establish a standardized naming system.

Start Preliminary Plans	Mar 2017	Award Construction Contract	Oct 2019
Start Working Drawings	Aug 2018	Complete Construction	Feb 2020
Complete Working Drawings	Apr 2019	Advertise for FF&E	N/A
DSA Final Approval	Jul 2019	DSA Close Out	Apr 2020



Budget Narrative: Budget reflects Board action on 5/21/2018 and 4/22/2019. On May 21, 2018, the Board approved \$500,000. On April 22, 2019, the Board approved the funding allocation of \$4,431,121.

	Original	Revision	Total
Project Budget:	\$3,000,000	\$1,931,121	\$4,931,121
District Funding Commitment:	\$ 500,000	\$4,431,121	\$4,931,121
Anticipated State Match:	\$ 0	\$0	
Basic Aid Allocation:	\$ 500,000	\$4,431,121	\$4,931,121

Status: Design Phase. Reviewing DSA comments.

In Progress: Awaiting DSA approval.

Recently Completed: Submitted 100% Construction Documents to DSA. City of Tustin courtesy review completed. Received DSA comments.

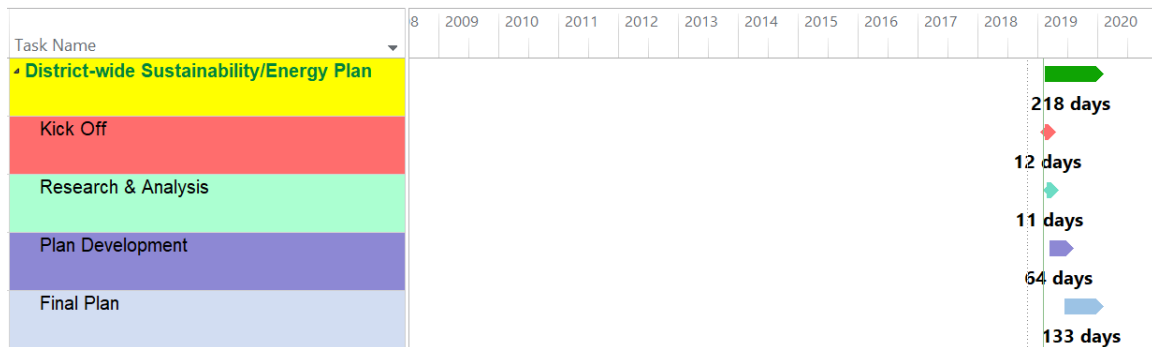
Focus: Develop bid documents. Respond to DSA comments and set-up DSA back check appointment.

DISTRICT WIDE

1. SUSTAINABILITY/ ENERGY PLAN

Project Description: The Sustainability/Energy Plan supports the colleges' plans for future sustainability/energy projects, provides best practices, aids with energy savings programs, and recommends various sustainability projects. The project has two phases, the first developed building design and construction guidelines and the second develops campus organizational policies and procedures. The Plan will inform the upcoming Facilities Master Plan process.

Kick Off, Phase II	Mar 2019	Start Plan Development	Jul 2019
Start Research/Analysis	Mar 2019	Complete Plan	Oct 2019
Complete Research/Analysis	Jul 2019	Final Plan, Phase II	Dec 2019



Budget Narrative: Budget reflects Board action on 6/22/2015, 8/22/2016, 6/26/2017, and 5/21/2018. On June 22, 2015, the Board approved \$200,000. On August 22, 2016, the Board approved \$40,000. On June 26, 2017, the Board approved \$200,000. On May 21, 2018, the Board approved \$200,000.

	<u>Original</u>	<u>Revision</u>	<u>Total</u>
Project Budget:	\$200,000	\$440,000	\$640,000
District Funding Commitment:	\$200,000	\$440,000	\$640,000
Anticipated State Match:	\$N/A	\$N/A	\$N/A
Basic Aid Allocation:	\$200,000	\$440,000	\$640,000

Status: Research and Analysis Phase: 50% complete.

In Progress: Initial utility data is being analyzed – over 200,000 data points collected. Building energy use modeling underway using utility data and State Chancellor’s Office FUSION database.

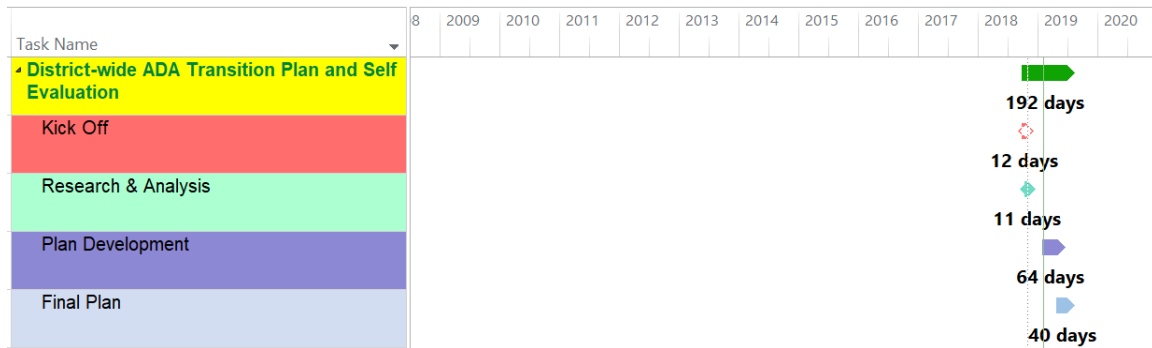
Recently Completed: Briefing and discussion on Phase II goals and objectives with each college.

Focus: Analysis of interval utility usage data. Develop energy model of each building and its consumption of electricity. Review the Board of Governor’s Resolution 2019-02 on the “Climate Change and Sustainability Policy” for inclusion in our analysis.

2. ADA TRANSITION PLAN AND SELF EVALUATION

Project Description: The ADA Transition Plan project audited District-wide access compliance and prioritized, budgeted and scheduled the District’s Americans with Disabilities Act (ADA) Transition Plans. This information will inform the upcoming Facilities Master Plan process. Phase II work includes self-evaluation of services, policies and practices.

Kick Off – Phase II	Nov 2018	Start Plan Development	Feb 2019
Start Research/Analysis	Nov 2018	Draft Plan	May 2019
Complete Research/Analysis	Jan 2019	Final Plan	Jul 2019



Budget Narrative: Budget reflects Board action on 6/22/2015, 6/27/2016 and 6/26/2017. On June 22, 2015, the Board approved \$400,000. On June 27, 2016, the Board approved \$440,000. On June 26, 2017, the Board approved \$400,000.

	<u>Original</u>	<u>Revision</u>	<u>Total</u>
Project Budget:	\$400,000	\$840,000	\$1,240,000
District Funding Commitment:	\$400,000	\$840,000	\$1,240,000
Anticipated State Match:	\$N/A	\$N/A	\$N/A
Basic Aid Allocation:	\$400,000	\$840,000	\$1,240,000

Status: Phase II Plan Development underway.

In Progress: Draft report and recommendations are under review.

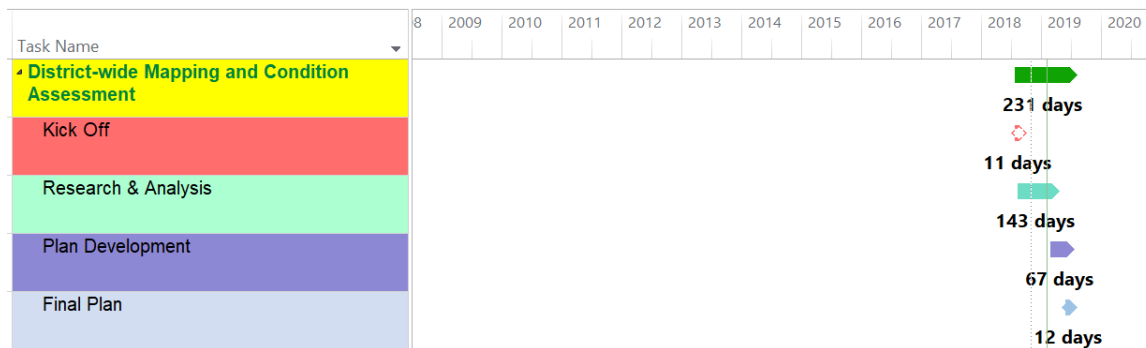
Recently Completed: Draft plan has been reviewed and returned to consultant.

Focus: Complete final plan for district-wide review.

3. MAPPING AND CONDITION ASSESSMENT

Project Description: This project comprehensively documents the horizontal and vertical positions of underground utilities and assesses existing conditions. Accurate utility information prevents construction delays, claims, and utilities conflicts.

Kick Off	Aug 2018	Start Plan Development	Aug 2018
Start Research/Analysis	Aug 2018	Draft Plan	Mar 2019
Complete Research/Analysis	Mar 2019	Final Plan	Aug 2019



Budget Narrative: Budget reflects Board action on 8/22/2016, 6/26/2017, and 5/21/2018. On August 22, 2016, the Board approved \$400,000. On June 26, 2017, the Board approved \$500,000. On May 21, 2018, the Board approved \$3,000,000.

	<u>Original</u>	<u>Revision</u>	<u>Total</u>
Project Budget:	\$400,000	\$3,500,000	\$3,900,000
District Funding Commitment:	\$400,000	\$3,500,000	\$3,900,000
Anticipated State Match:	\$N/A	\$N/A	\$N/A
Basic Aid Allocation:	\$400,000	\$3,500,000	\$3,900,000

Status: Phase Four (Draft Deliverables Review) at Irvine Valley College. Phase Four (Final Deliverables) at Saddleback College.

In Progress: Finalize deliverables for IVC and schedule draft condition assessment report page-turn review sessions with IVC’s Facilities Maintenance & Operations (FMO), Information Technology (IT) and Campus Police.

Recently Completed: *Received Saddleback College final project deliverables and distributed to project's stakeholders.*

Focus: Continue review of draft deliverables with IVC's FMO, IT and Campus Police. Present final project deliverables to IVC's Executive Cabinet. *Finalize Saddleback College condition assessment report and closeout construction management services agreement.*

GENERAL NOTES

- Project updates for active projects may be viewed at:
<http://www.socccd.edu/businessservices/ProjectUpdates.html>
- Schedule Table: Bold dates in the schedule table indicate actuals. Items that are not bold indicate anticipated dates.
- Budget Table:
 - When state matches are identified, the project budgets reflect the allocated state match as reported in FUSION for the latest planning year. (FUSION is the State Chancellor's Office database for Capital Outlay.)
 - The "Revisions" column for the State Match category includes changes due to escalation and changes that may have occurred to the state's percentage (i.e. going from an 80% match down to a 50% match) as the economy has changed from the original project approvals to current date. The "Revisions" column for the Basic Aid Allocation will show a total variation to date taking into account both increased and decreased basic aid allocations.
 - The Unassigned category identifies an underfunded budget.
- The Budget Narrative paragraph for each project discusses the history of change to all category amounts over the life of the project.